

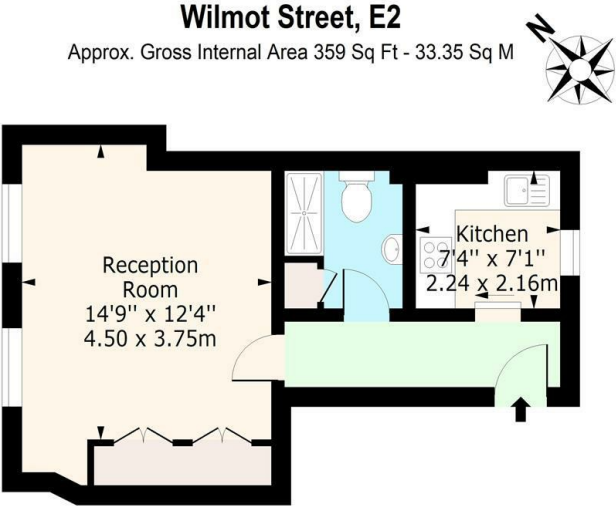
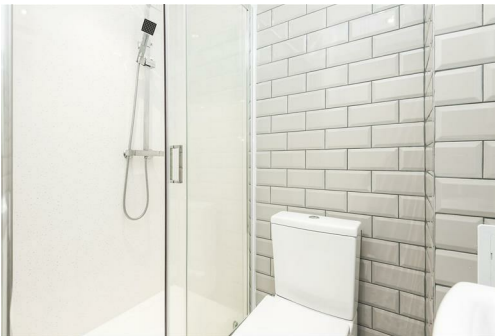


Wilmot Street, London, , E2 0BU
£1,200 PCM

Elms Estates are delighted to bring to the market To Let this beautiful top (4th) floor studio apartment situated on the ever popular Wilmot Street located within the Heart of the East End with easy access to all of the Restaurants, Bars, Shops, Markets, Gyms, Parks, Galleries and Museums this Exciting Area has on offer.

The property benefits hugely from having Bethnal Green Overground Station at one end of the road with Bethnal Green Tube Station (Central Line) around the corner. The property is available for occupation from 01 October 2020 and early viewing is highly recommended in order to avoid disappointment.





Third Floor
Floor Area 359 Sq Ft - 33.35 Sq M
For Illustration Purposes Only - Not To Scale
www.lpaplus.com

Energy Efficiency Rating		Environmental Impact (CO ₂) Rating	
Current	Potential	Current	Potential
<p>Very energy efficient - lower running costs</p> <p>(92 plus) A</p> <p>(81-91) B</p> <p>(69-80) C</p> <p>(55-68) D</p> <p>(39-54) E</p> <p>(21-38) F</p> <p>(1-20) G</p> <p>Not energy efficient - higher running costs</p>			
	70		
	48		
<p>Very environmentally friendly - lower CO₂ emissions</p> <p>(92 plus) A</p> <p>(81-91) B</p> <p>(69-80) C</p> <p>(55-68) D</p> <p>(39-54) E</p> <p>(21-38) F</p> <p>(1-20) G</p> <p>Not environmentally friendly - higher CO₂ emissions</p>			
		45	52
England & Wales		England & Wales	
EU Directive 2002/91/EC		EU Directive 2002/91/EC	